

**PRESS RELEASE**

No. 273 of November 10, 2014

**Vital statistics  
in September 2014**

*For an accurate interpretation of the results, please see the methodological specifications on page 3 of the press release.*

September 2014 compared to August 2014<sup>1</sup>**Birth rate, death rate and natural increase**

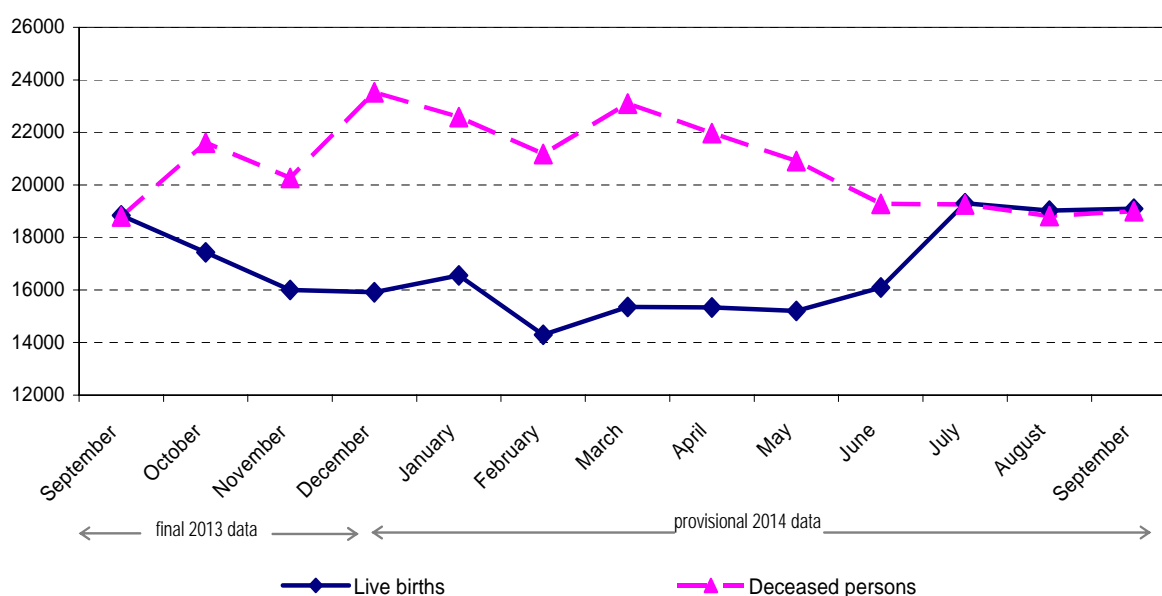
In September, the **births** of 19092 children were recorded, 70 more than in August 2014.

The number of persons whose **deaths** were recorded in September was 18997, 178 more than in August 2014.

The **natural increase** was positive (an excess of live births over deceased persons) both in September (95 persons) and in August (203 persons).

The number of **deaths of children under one year** recorded in September was 164, an increase of 25 compared to August (139 deceased persons under 1 year).

Evolution of the number of live births and deceased persons during the period September 2013 – September 2014



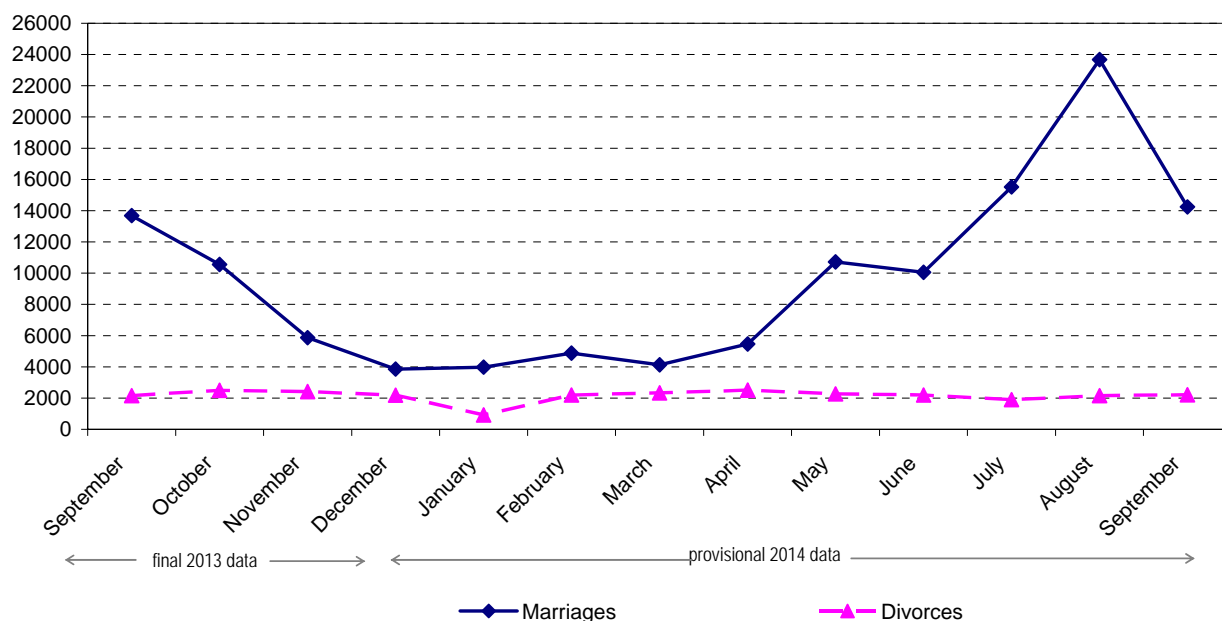
<sup>1</sup> The data for the months of 2013 are final, and the data for the months of 2014 are provisional.

## Marriage rate and divorce rate

14242 **marriages** were recorded at Register Offices in September, 9434 less than in August.

2216 **divorces** were formally pronounced by final court decree and in accordance with Law No 202/2010, 61 more than in August.

Evolution of the number of marriages and divorces during the period September 2013 – September 2014



## September 2014 compared to September 2013<sup>1</sup>

### Birth rate, death rate and natural increase

The number of **live births** rose by 249 in September compared to the same month of 2013, and the number of persons who **died** was higher by 200 than in September 2013.

The **natural increase** was positive both in September 2014 (95 persons) and in September 2013 (46 persons).

The number of **children under one year who died** was higher by 49 than in September 2013.

### Marriage rate and divorce rate

The number of **marriages** rose by 555 in September 2014 compared to the same month of the previous year. In September 2014, 53 more **divorces** than in September 2013 were formally pronounced by final court decree and in accordance with Law No 202/2010.

<sup>1</sup> The data for the months of 2013 are final, and the data for the months of 2014 are provisional.

## Methodological specifications

1. The data on the demographic phenomena were obtained by processing the information contained in the statistical bulletins regarding live births, deceased persons, marriages and divorces drawn up by the city halls of municipalities, cities and communes while registering these phenomena in the civil status records.

2. Definitions

**Live birth** is a product of conception, completely ejected or extracted from the mother's body, regardless of the pregnancy duration, who, after this separation, gives a sign of life (breathing, heart activity, beats of the umbilical cord or voluntary muscular contractions).

**Deceased** is the person whose vital functions definitively ceased after any amount of time passed from his/her birth.

**Natural increase** represents the difference between the number of live births and the number of deceased persons during the reference period.

**Marriage** represents a union between a man and a woman, concluded according to the country's legislation, in order to set up a family, where husband and wife have rights and obligations towards one another, as well as towards their children.

**Divorce** represents the dissolution of a legally concluded marriage, according to a final decree of the court, of the civil register officer or of a notary public. The data refer to the divorce petitions for which the dissolution of marriage has been admitted.

**Domicile** is the address where a person declares to have his/her main home, as shown in the identity document and in the records of the State's administrative bodies.

**Usual residence** is the place where a person normally spends the daily period of rest, regardless of temporary absences for purposes of recreation, holidays, visits to friends and relatives, business, medical treatment or religious pilgrimage. The usual residence may be the same as the domicile or may differ from it, for the persons who choose to establish their usual residence in a locality other than the locality of domicile in the country or abroad.

3. Coverage

**Live births** include the children born alive whose mothers, at the time of giving birth, had had their domicile or usual residence in Romania for a period of at least 12 months.

The **deceased** include the persons who, at the time of their death, had had their domicile or usual residence in Romania for a period of at least 12 months.

4. The data for the year 2013 are final, and the data for the year 2014 are provisional. The data for the months of 2013 are broken down according to the date when the phenomenon occurred, and the data for the year 2014 are broken down according to the date when the phenomenon was recorded.

The **next press release** will be issued on Wednesday, December 10, 2014.