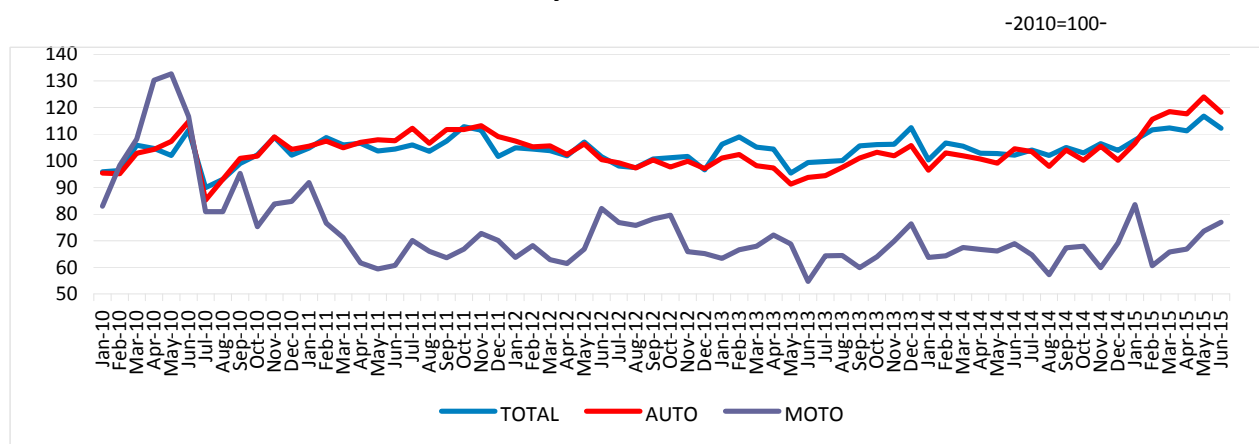


Domain: Trade - Services

THE TRADE WITH MOTOR VEHICLES INCREASED BY 9.9%; THE MARKET SERVICES PROVIDED TO THE POPULATION INCREASED BY 4.9%

- Compared to the previous month, in June 2015, **the turnover of the trade with motor vehicles and motorcycles** increased as gross series by **4.1%** and decreased as adjusted series according to the number of working days and to seasonality by **3.9%**. **The turnover for the market services provided to the population** increased, compared to the previous month, both as gross series by **6.2%** and as adjusted series according to the number of working days and to seasonality by **0.7%**.
- Compared to the corresponding month of the previous year, **the turnover of the trade with motor vehicles and motorcycles** increased both as gross series and as adjusted series according to the number of working days and to seasonality by **9.9%**, each. **The turnover for the market services provided to the population** increased both as gross series by **4.9%** and as adjusted series according to the number of working days and to seasonality by **5.1%**.
- Compared to Semester I 2014, in Semester I 2015, **the turnover of the trade with motor vehicles and motorcycles** increased both as gross series by **7.8%** and as adjusted series according to the number of working days and to seasonality by **8.4%**. **The turnover for the market services provided to the population** increased both as gross series by **4.1%** and as adjusted series according to the number of working days and to seasonality by **3.9%**.

Monthly evolution of turnover in wholesale and retail, maintenance and repair of motor vehicles and motorcycles (adjusted series according to the number of working days and to the seasonality) - January 2010 – June 2015 -



AUTO = Trade with motor vehicles; MOTO= Trade with motorcycles, spare parts and related accessories, maintenance and repair of motorcycles

Graphic data in xls format (VI.2014-VI.2015)

**Monthly evolution of the turnover for the market services provided to the population
(adjusted series according to the number of working days and to the seasonality)
- January 2010 – June 2015 -**



Graphic data in xls format (VI.2014-VI.2015)

**Turnover indices for the trade with motor vehicles and motorcycles and
market services provided to the population**

		JUNE 2015 In % compared to:		Semester I 2015/ Semester I 2014 -%-
		MAY 2015	JUNE 2014	
Total wholesale and retail, maintenance and repair of motor vehicles and motorcycles	B	104.1	109.9	107.8
	S	96.1	109.9	108.4
Trade with motor vehicles	B	103.8	114.2	116.7
	S	95.4	113.1	115.7
Maintenance and repair of motor vehicles	B	102.7	114.2	107.9
	S	100.1	112.5	107.8
Trade with spare parts and accessories for motor vehicles	B	105.2	102.6	97.1
	S	100.5	102.4	97.8
Trade with motorcycles, spare parts and related accessories; maintenance and repair of motorcycles	B	101.7	121.4	107.9
	S	104.6	111.7	107.6
Market services provided to the population – total	B	106.2	104.9	104.1
	S	100.7	105.1	103.9
out of which:				
Hotels and restaurants	B	109.1	102.7	100.9
	S	100.6	102.5	100.8
Gambling and other recreational activities	B	95.4	104.4	106.0
	S	100.7	104.3	105.4
Activities of travel agencies and tour operators; other travel booking and assistance services	B	120.8	113.1	113.4
	S	96.8	101.2	103.8
Hairdressing and other embellishment activities	B	98.5	112.6	112.5
	S	93.4	115.1	113.5
Washing, cleaning (dry) of textile articles and fur products	B	104.8	101.9	97.1
	S	104.7	102.0	98.2

Note: B= gross series; S= adjusted series according to the number of working days and to seasonality

Table data in xls format

June 2015 compared to May 2015

Compared to the previous month, in June 2015, **the turnover of wholesale and retail, the maintenance and repair of motor vehicles and motorcycles, gross series** increased by 4.1% due to rises in the trade with spare parts and accessories for motor vehicles (+5.2%), in the trade with motor vehicles (+3.8%), in the maintenance and repair activities of motor vehicles (+2.7%) and in the trade with motorcycles, spare parts and related accessories; maintenance and repair of motorcycles (+1.7%).

The turnover of wholesale and retail, the maintenance and repair of motor vehicles and motorcycles, adjusted series according to the number of working days and to the seasonality decreased by 3.9% in June 2015 compared to the previous month.

As to the **market services provided to the population, gross series**, in June 2015 compared to the previous month, due to rises in the activities of travel agencies and tour operators (+20.8%), in the activities of hotels and restaurants (+9.1%) and in the activities of washing, cleaning and dyeing of textiles and furs (+4.8%). There were drops in the activities of gambling and other recreational activities (-4.6%) and in the services of hairdressing and other embellishment activities (-1.5%).

The turnover volume for the **market services provided to the population, adjusted series according to the number of working days and to the seasonality**, increased by 0.7% in June 2015 compared to the previous month.

June 2015 compared to June 2014

Compared to June 2014, in June 2015, **the turnover of wholesale and retail, the maintenance and repair of motor vehicles and motorcycles, gross series**, increased per total by 9.9% due to rises in the trade with motorcycles, spare parts and related accessories; the maintenance and repair of motorcycles (+21.4%), in the trade with motor vehicles (+14.2%), in the maintenance and repair of motor vehicles (+14.2%) and in the trade with spare parts and accessories for motor vehicles (+2.6%).

In June 2015, **the turnover of wholesale and retail, the maintenance and repair of motor vehicles and motorcycles, adjusted series according to the number of working days and to the seasonality**, increased per total by 9.9% compared to June 2014.

In June 2015, **the market services provided to the population, gross series** registered a turnover of 4.9% more compared to June 2014 mainly due to rises in the activities of travel agencies and tour operators (+13.1%), in the hairdressing and other embellishment activities (+12.6%), in the activities of gambling and other recreational activities (+4.4%), in the activities of hotels and restaurants (+2.7%) and in the activities of washing, cleaning and dyeing of textiles and furs (+1.9%).

In June 2015, **the market services provided to the population, adjusted series according to the number of working days and to the seasonality** increased by 5.1% compared to June 2014.

Semester I 2015 compared to Semester I 2014

In Semester I 2015, compared to Semester I 2014, **the turnover of wholesale and retail, the maintenance and repair of motor vehicles and motorcycles, gross series**, increased per total by 7.8% due to rises in the trade with motor vehicles (+16.7%), in the maintenance and repair of motor vehicles (+7.9%) and in the trade with motorcycles, spare parts and related accessories; the maintenance and repair of motorcycles (+7.9%). There were drops in the trade with spare parts and accessories for motor vehicles (-2.9%).

In Semester I 2015, **the turnover of wholesale and retail, the maintenance and repair of motor vehicles and motorcycles, adjusted series according to the number of working days and to the seasonality**, increased per total by 8.4% compared to Semester I 2014.

In Semester I 2015, **the market services provided to the population, gross series** registered a turnover of 4.1% more compared to Semester I 2014 due to rises in the activities of travel agencies and tour operators (+13.4%), in the hairdressing and other embellishment activities (+12.5%), in the activities of gambling and other recreational activities (+6.0%) and in the activities of hotels and restaurants (+0.9%). There were drops in the activities of washing, cleaning and dyeing of textiles and furs (-2.9%).

In Semester I 2015, **the market services provided to the population, adjusted series according to the number of working days and to the seasonality** increased by 3.9% compared to Semester I 2014.

Additional information:

For the correct interpretation of results, kindly see the [Methodological Note](#).

For additional information, kindly see the statistical publication Monthly Statistical Bulletin (date of issue August 19, 2015) and on the line data base TEMPO of the NIS (data for June 2015 will be available on August 14th).

The next issue of the press release will be on Thursday, September 10, 2015.

The archive of the press releases: <http://www.insse.ro/cms/en/content/press-releases>

The Department of Communication

e-mail: biroupresa@insse.ro

Tel: +4021 3181869