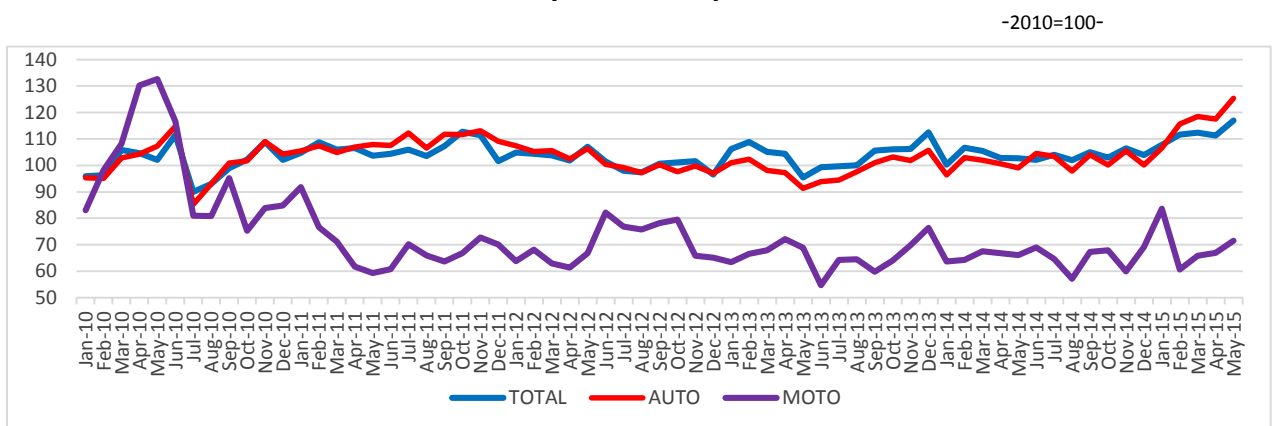


Domain: Trade - Services

THE TRADE WITH MOTOR VEHICLES INCREASED BY 11.4%; THE MARKET SERVICES PROVIDED TO THE POPULATION INCREASED BY 7.2%

- Compared to the previous month, in May 2015, **the turnover of the trade with motor vehicles and motorcycles** increased both as gross series by **4.0%** and as adjusted series according to the number of working days and to seasonality by **5.1%**. **The turnover for the market services provided to the population** increased, compared to the previous month, as gross series by **4.7%** and decreased as adjusted series according to the number of working days and to seasonality by **1.3%**.
- Compared to the corresponding month of the previous year, **the turnover of the trade with motor vehicles and motorcycles** increased both as gross series by **11.4%** and as adjusted series according to the number of working days and to seasonality by **13.9%**. **The turnover for the market services provided to the population** increased both as gross series by **7.2%** and as adjusted series according to the number of working days and to seasonality by **7.5%**.
- Compared to the period 1.I – 31.V.2014, in the period 1.I – 31.V.2015, **the turnover of the trade with motor vehicles and motorcycles** increased both as gross series by **7.3%** and as adjusted series according to the number of working days and to seasonality by **8.1%**. **The turnover for the market services provided to the population** increased both as gross series by **3.8%** and as adjusted series according to the number of working days and to seasonality by **3.5%**.

Monthly evolution of turnover in wholesale and retail, maintenance and repair of motor vehicles and motorcycles (adjusted series according to the number of working days and to the seasonality) - January 2010 – May 2015 -



AUTO = Trade with motor vehicles; MOTO= Trade with motorcycles, spare parts and related accessories, maintenance and repair of motorcycles
Graphic data in xls format (V.2014-V.2015)

Monthly evolution of the turnover for the market services provided to the population (adjusted series according to the number of working days and to the seasonality) - January 2010 – May 2015 -



[Graphic data in xls format \(V.2014-V.2015\)](#)

Turnover indices for the trade with motor vehicles and motorcycles and market services provided to the population

		MAY 2015 In % compared to:		1.I – 31.V. 2015/ 1.I – 31.V. 2014 -%-
		APRIL 2015	MAY 2014	
Total wholesale and retail, maintenance and repair of motor vehicles and motorcycles	B	104.0	111.4	107.3
	S	105.1	113.9	108.1
Trade with motor vehicles	B	106.0	126.4	117.3
	S	106.6	126.5	116.5
Maintenance and repair of motor vehicles	B	97.3	104.7	106.5
	S	99.6	111.3	106.9
Trade with spare parts and accessories for motor vehicles	B	103.3	95.7	96.0
	S	103.1	97.6	96.8
Trade with motorcycles, spare parts and related accessories; maintenance and repair of motorcycles	B	102.7	109.6	105.0
	S	106.8	108.2	106.1
Market services provided to the population – total	B	104.7	107.2	103.8
	S	98.7	107.5	103.5
out of which:				
Hotels and restaurants	B	111.2	104.2	100.3
	S	101.0	104.2	100.3
Gambling and other recreational activities	B	95.9	109.9	106.2
	S	96.5	109.3	105.6
Activities of travel agencies and tour operators; other travel booking and assistance services	B	101.1	115.5	113.6
	S	102.8	104.9	104.0

Hairdressing and other embellishment activities	B	99.0	118.8	112.7
	S	98.6	121.6	113.6
Washing, cleaning (dry) of textile articles and fur products	B	102.8	95.4	96.2
	S	100.0	94.8	97.2

Note: B= gross series; S= adjusted series according to the number of working days and to seasonality

[Table data in xls format](#)

May 2015 compared to April 2015

Compared to the previous month, in May 2015, **the turnover of wholesale and retail, the maintenance and repair of motor vehicles and motorcycles, gross series** increased by 4.0% due to rises: in the trade with motor vehicles (+6.0%), in the trade with spare parts and accessories for motor vehicles (+3.3%) and in the trade with motorcycles, spare parts and related accessories; maintenance and repair of motorcycles (+2.7%). There was a decrease in the maintenance and repair activities of motor vehicles (-2.7%).

The turnover of wholesale and retail, the maintenance and repair of motor vehicles and motorcycles, adjusted series according to the number of working days and to the seasonality increased by 5.1% in May 2015 compared to the previous month.

As to the **market services provided to the population, gross series**, in May 2015 compared to the previous month, due to rises: in the activities of hotels and restaurants (+11.2%), in the activities of washing, cleaning and dyeing of textiles and furs (+2.8%) and in the activities of travel agencies and tour operators (+1.1%). There were drops in the activities of gambling and other recreational activities (-4.1%) and in the services of hairdressing and other embellishment activities (-1.0%).

The turnover volume for the **market services provided to the population, adjusted series according to the number of working days and to the seasonality**, decreased by 1.3% in May 2015 compared to the previous month.

May 2015 compared to May 2014

Compared to May 2014, in May 2015, **the turnover of wholesale and retail, the maintenance and repair of motor vehicles and motorcycles, gross series**, increased per total by 11.4% due to rises: in the trade with motor vehicles (+26.4%), in the trade with motorcycles, spare parts and related accessories; the maintenance and repair of motorcycles (+9.6%) and in the maintenance and repair of motor vehicles (+4.7%). There were drops in the trade with spare parts and accessories for motor vehicles (-4.3%).

In May 2015, **the turnover of wholesale and retail, the maintenance and repair of motor vehicles and motorcycles, adjusted series according to the number of working days and to the seasonality**, increased per total by 13.9 compared to May 2014.

In May 2015, **the market services provided to the population, gross series** registered a turnover of 7.2% more compared to May 2014 mainly due to rises in the hairdressing and other embellishment activities (+18.8%), in the activities of travel agencies and tour operators (+15.5%), in the activities of gambling and other recreational activities (+9.9%) and in the activities of hotels and restaurants (+4.2%). There was a decrease of 4.6% in the activities of washing, cleaning and dyeing of textiles and furs.

In May 2015, **the market services provided to the population, adjusted series according to the number of working days and to the seasonality** increased by 7.5% compared to May 2014.

Period 1.I – 31.V.2015 compared to period 1.I – 31.V.2014

Compared to the period 1.I – 31.V.2014, in the period 1.I – 31.V.2015, **the turnover of wholesale and retail, the maintenance and repair of motor vehicles and motorcycles, gross series**, increased per total by 7.3% due to rises: in the trade with motor vehicles (+17.3%), in the maintenance and repair of motor vehicles (+6.5%) and in the trade with motorcycles, spare parts and related accessories; the maintenance and repair of motorcycles (+5.0%). There were drops in the trade with spare parts and accessories for motor vehicles (-4.0%).

In the period 1.I – 31.V.2015, **the turnover of wholesale and retail, the maintenance and repair of motor vehicles and motorcycles, adjusted series according to the number of working days and to the seasonality**, increased per total by 8.1% compared to the period 1.I – 31.V.2014.

In the period 1.I – 31.V.2015, **the market services provided to the population, gross series** registered a turnover of 3.8% more compared to the period 1.I – 31.V.2014 due to rises in the activities of travel agencies and tour operators (+13.6%), in the hairdressing and other embellishment activities (+12.7%), in the activities of gambling and other recreational activities (+6.2%) and in the activities of hotels and restaurants (+0.3%). There were drops in the activities of washing, cleaning and dyeing of textiles and furs (-3.8%).

In the period 1.I – 31.V.2015, **the market services provided to the population, adjusted series according to the number of working days and to the seasonality** increased by 3.5% compared to the period 1.I – 31.V.2014.

Additional information:

For the correct interpretation of results, kindly see the [Methodological Note](#).

For additional information, kindly see the statistical publication Monthly Statistical Bulletin (date of issue July 20, 2015) and the on line data base TEMPO of the NIS.

The next issue of the press release will be on Monday, August 10, 2015.

The archive of the press releases: <http://www.insse.ro/cms/ro/content/comunicate-de-pres-a-arhiva>

The Department of Communication

e-mail: birouipresa@insse.ro

Tel: +4021 3181869