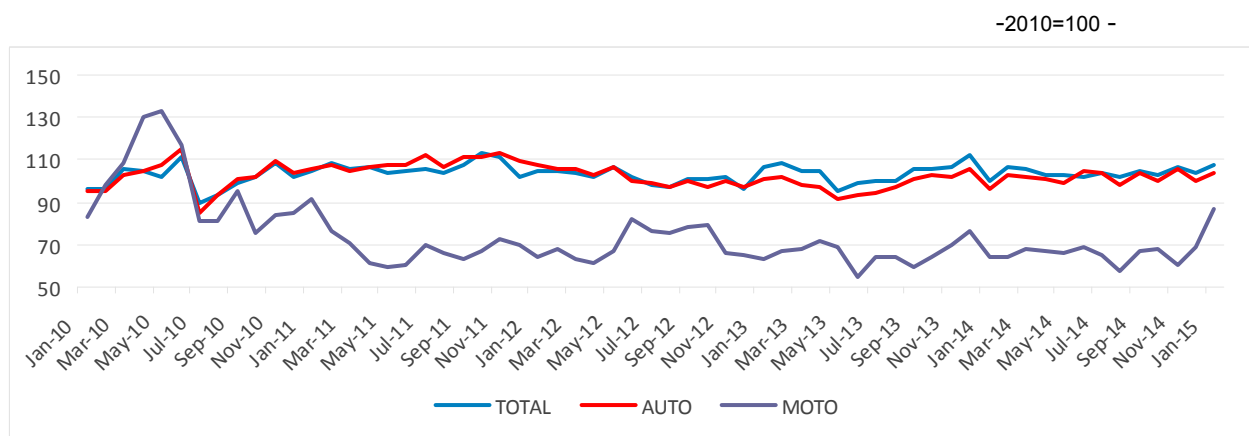


Domain: Trade - services

THE TRADE WITH MOTOR VEHICLES INCREASED BY 4.6%; THE MARKET SERVICES PROVIDED TO THE POPULATION DECREASED BY 2.5%

- Compared to the previous month, in January 2015, **the turnover of the trade with motor vehicles and motorcycles** decreased as gross series by **19.2%** and increased as **adjusted series according to the number of working days and to seasonality** by **3.8%**. **The turnover for the market services provided to the population** decreased compared to the previous month by **6.2%** and increased as adjusted series according to the number of working days and to seasonality by **3.3%**.
- Compared to the corresponding month of the previous year, **the turnover of the trade with motor vehicles and motorcycles** increased both as gross series by **4.6%** and as adjusted series according to the number of working days and to seasonality by **7.6%**. **The turnover for the market services provided to the population** decreased both as gross series by **2.5%** and as adjusted series according to the number of working days and to seasonality by **2.0%**.

Monthly evolution of turnover in wholesale and retail, maintenance and repair of motor vehicles and motorcycles (adjusted series according to the number of working days and to the seasonality) - January 2010 – January 2015 -



AUTO = Trade with motor vehicles; MOTO= Trade with motorcycles, spare parts and related accessories, maintenance and repair of motorcycles
[Graphic data in xls format](#)

**Monthly evolution of the turnover for the market services provided to the population
(adjusted series according to the number of working days and to the seasonality)
- January 2010 – January 2015 -**

-2010=100 -



[Graphic data in xls format](#)

**Turnover indices for the trade with motor vehicles and motorcycles and
market services provided to the population**

		JANUARY 2015 In % compared to:	
		DECEMBER 2014	JANUARY 2014
Total wholesale and retail, maintenance and repair of motor vehicles and motorcycles	B	80.8	104.6
	S	103.8	107.6
Trade with motor vehicles	B	74.8	110.8
	S	103.8	107.7
Maintenance and repair of motor vehicles	B	93.4	107.0
	S	103.0	101.3
Trade with spare parts and accessories for motor vehicles	B	84.8	97.2
	S	96.5	99.4
Trade with motorcycles, spare parts and related accessories; maintenance and repair of motorcycles	B	131.7	145.6
	S	125.1	135.7
Market services provided to the population – total	B	93.8	97.5
	S	103.3	98.0
out of which:			
Hotels and restaurants	B	91.8	97.0
	S	106.5	97.9
Gambling and other recreational activities	B	95.4	98.3
	S	97.6	97.3
Activities of travel agencies and tour operators; other travel booking and assistance services	B	99.5	97.4
	S	98.9	98.9
Hairdressing and other embellishment activities	B	88.1	105.4
	S	101.2	110.9
Washing, cleaning (dry) of textile articles and fur products	B	97.2	91.4
	S	96.7	95.8

Note: B= gross series; S= adjusted series according to the number of working days and to seasonality

[Graphic data in xls format](#)

January 2015 compared to December 2014

Compared to the previous month, in January 2015, **the turnover of wholesale and retail, the maintenance and repair of motor vehicles and motorcycles, gross series** decreased by 19.2% due to drops in the trade with motor vehicles (-25.2%), in the trade with spare parts and accessories for motor vehicles (-15.2%) and in the maintenance and repair activities of motor vehicles (-6.6%). There was an increase of 31.7% in the trade with motorcycles, spare parts and related accessories; maintenance and repair of motorcycles.

The turnover of wholesale and retail, the maintenance and repair of motor vehicles and motorcycles, adjusted series according to the number of working days and to the seasonality increased by 3.8% in January 2015 compared to the previous month.

As to the **market services provided to the population, gross series**, in January 2015 compared to the previous month, due to drops in the services of hairdressing and other embellishment activities (-11.9%), in the activities of hotels and restaurants (-8.2%), in the activities of gambling and other recreational activities (-4.6%), in the activities of washing, cleaning and dyeing of textiles and furs (-2.8%) and in the activities of travel agencies and tour operators (-0.5%).

The turnover volume for the **market services provided to the population, adjusted series according to the number of working days and to the seasonality**, increased by 3.3% in January 2015 compared to the previous month.

January 2015 compared to January 2014

Compared to January 2014, in January 2015, **the turnover of wholesale and retail, the maintenance and repair of motor vehicles and motorcycles, gross series**, increased per total by 4.6% due to rises in the trade with motorcycles, spare parts and related accessories; the maintenance and repair of motorcycles (+45.6%), in the trade with motor vehicles (+10.8%) and in the maintenance and repair activities of motor vehicles (+7.0%). There was a decrease of 2.8% in the trade with spare parts and accessories for motor vehicles.

In January 2015, **the turnover of wholesale and retail, the maintenance and repair of motor vehicles and motorcycles, adjusted series according to the number of working days and to the seasonality**, increased per total by 7.6% compared to January 2014.

In January 2015, **the market services provided to the population, gross series** registered a turnover of 2.5% less compared to January 2014 mainly due to drops in the activities of washing, cleaning and dyeing of textiles and furs (-8.6%), in the activities of hotels and restaurants (-3.0%), in the activities of travel agencies and tour operators (-2.6%) and in the activities of gambling and other recreational activities (-1.7%). There was an increase of 5.4% in the hairdressing and other embellishment activities.

In January 2015, **the market services provided to the population, adjusted series according to the number of working days and to the seasonality** decreased by 2.0% compared to January 2014.

Additional information:

For the correct interpretation of results, kindly see the [Methodological Note](#).

For additional information, kindly see the statistical publication Monthly Statistical Bulletin (date of issue March 20, 2015) and the on line data base TEMPO of the NIS.

The next issue of the press release will be on Wednesday, April 8, 2015.

The archive of the press releases: <http://www.insse.ro/cms/en/content/press-releases>

The Communication Department

e-mail: biroupresa@insse.ro

Tel: +4021 3181868