

Area: Population

Permanent resident population of Romania on 1st of July, 2015 decreased with 0.3% as against 1st of July, 2014

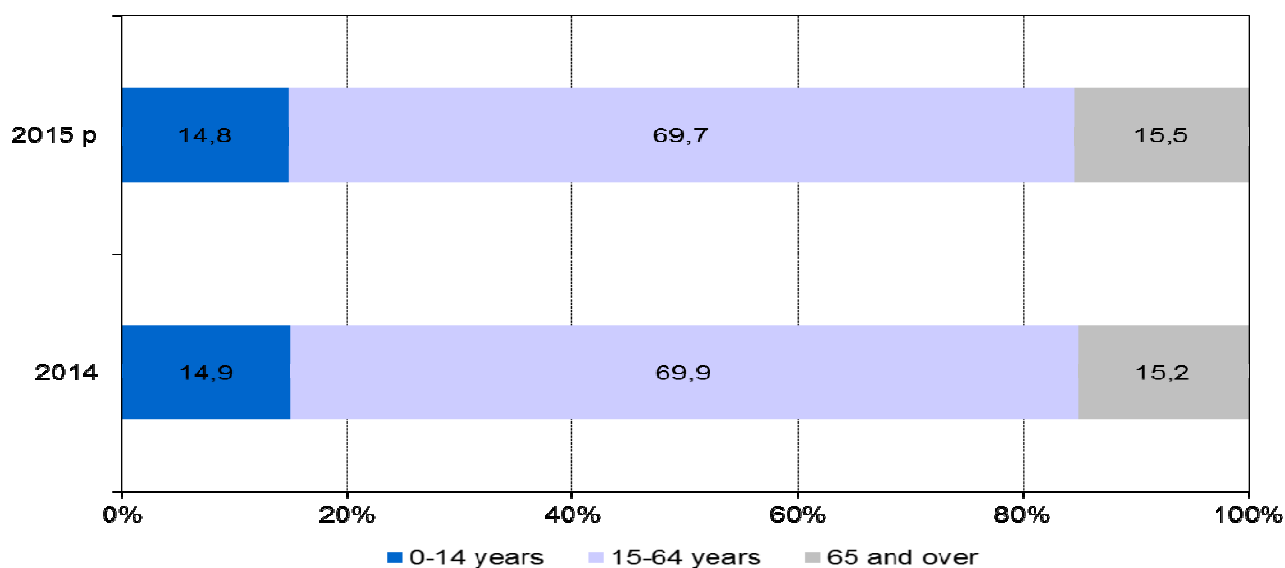
- On 1st of July, 2015^p, the permanent resident population was 22243 thousands persons.
- Urban and female population are in majority (56.4%, respectively 51.2%).
- The phenomenon of demographic ageing has increased, the elderly population of 65 years old and over exceeding the young population of 0-14 years with almost 168 thousand persons (3449 thousands besides 3281 thousands persons).

On 1st of July, 2015 the permanent resident urban population was 12549 thousands persons in slight decrease with 0.3% as against 1st of July, 2014.

The female population as of 1st of July, 2015 was 11385 thousands persons, decreasing with 0.3% compared with the same date last year.

The process of demographic aging has aggravated compared with 1st of July, 2014, the decreasing share of young people (0-14 years) being notable as well as the increasing with 0.3 percentage points of share of elderly population (65 years old and over).

The structure of permanent resident population on 1st of July, by large age groups



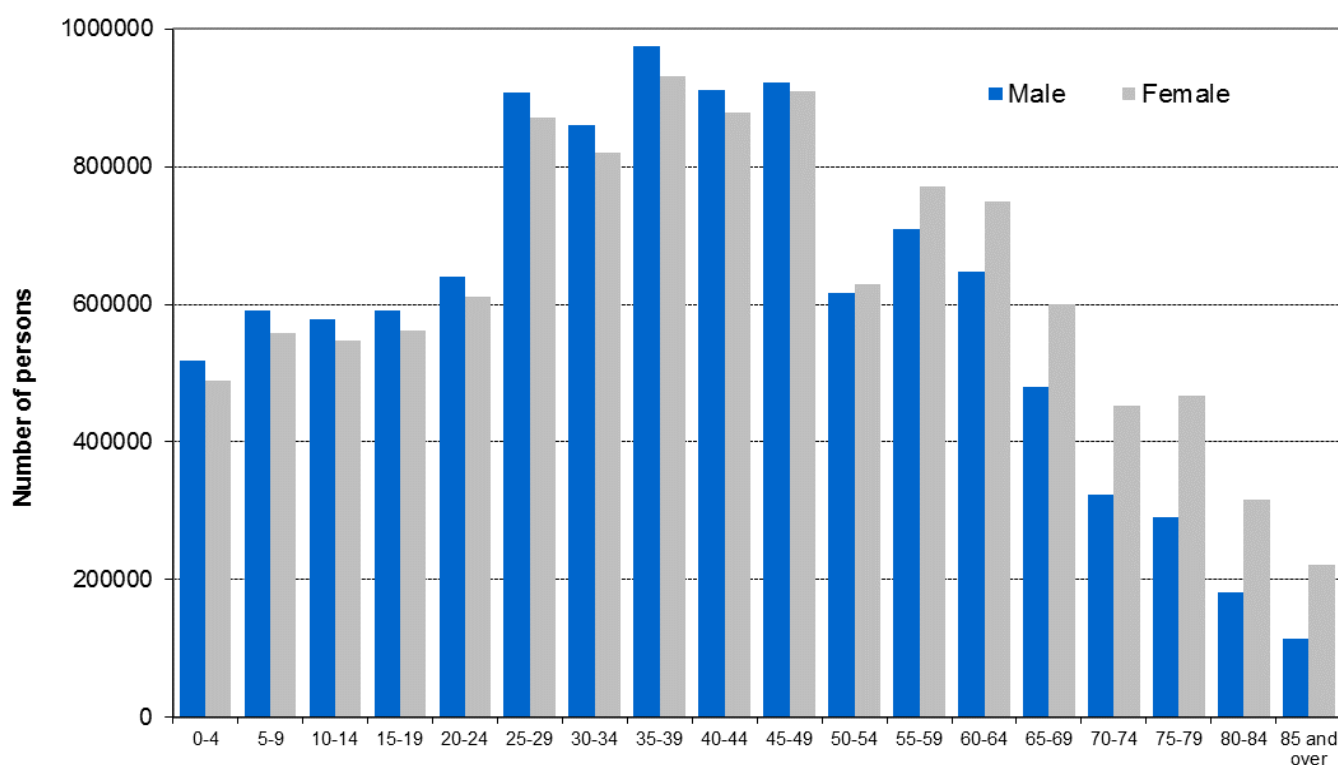
[The data of the graph \(xls\)](#)

^p Provisional data; will be revised in the second half of 2016 (see section 4 from [Methodological notes](#)).

The demographic ageing index increased from 101.9 (on 1st of July, 2014) at 105.1 elderly persons per 100 young persons (on 1st of July, 2015).

The average age of the population was 40.8 years, with 0.2 years greater than the one as of 1st of July, 2014. The median age was 40.2 years, rising with 0.4 years as against 1st of July, 2014.

Permanent resident population by age groups and sex on 1st of July, 2015



[The data of the graph \(xls\)](#)

On 1st of January, 2015 the largest share of the total population belongs to the 35-39 age group (8.6%). On male population, the share of the age group was 9.0% and on female population was 8.2%. The share of the 0-4 age group was 4.5%, smaller than the 5-9 age group (5.2%) and 10-14 age group (5.1%).

Additional information:

For an accurate interpretation of the indicators, please see [Methodological notes](#).

The next press release regarding permanent resident population on January 1, 2016 will appear on April 26, 2016.

Press release archive: <http://www.insse.ro/cms/en/content/press-releases>.

Communication Department

e-mail: birou presa@insse.ro

Tel: +4021 3181868