

## PRESS RELEASE

No. 159 of August 4, 2010

### Average earning<sup>\*)</sup> in June 2010

*For correct interpretation of results, please consult  
Methodological notes from page 2 of the press release*

In June 2010, gross nominal average earning was 1951 lei, by 0,6% less than in the previous month.

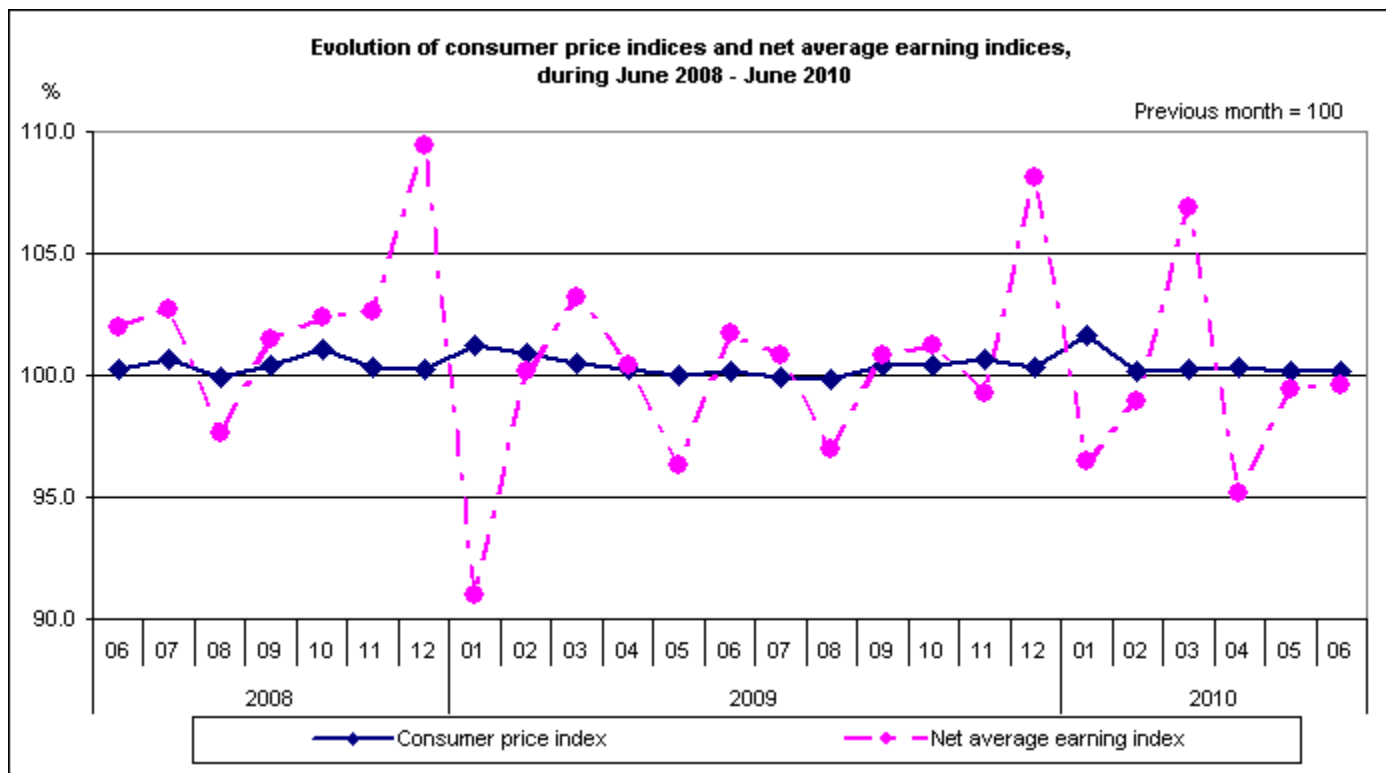
Net nominal average earning was 1422 lei, decreasing as against the previous month by 6 lei (-0.4%).

The highest values of net nominal average earning were registered in financial intermediation (3442 lei) and the lowest ones in hotels and restaurants (791 lei).

#### Earning in comparison with consumer price evolution

Real earning index for June 2010 as against previous month, calculated as ratio between net nominal average earning index and consumer price index was 99.4%.

As against October 1990, real earning index was 123.7%, by 0.7 percentage points lower than that registered in May 2010.



During the year, earning fluctuations are registered, being mostly determined by the 13<sup>th</sup> salary and holiday bonuses (December, March/April). They influence increases or decreases in keeping with the

period they are granted, finally leading to the diminish of monthly earning fluctuations at the whole year level.

\*) see Methodological notes from point 4. Concepts and definitions.

## June 2010 as compared to May 2010

Level of **monthly net average earning** of June 2010 registered slight differences as against the previous month, in keeping with the specific of economic activities.

**Increases in net average earning were** registered as a result of occasional premiums (including holiday bonuses), payment of rest leave from salary fund, payment of amounts from net profit and from other funds (including lunch tickets and holiday tickets), as well as achievement of production or higher cashing, returning from unpaid leave or technical unemployment, as follows:

- between 9% and 10% for computers and electronic and optical products, beverages, telecommunications;
- between 5% and 7% for other transport means, machinery, outfit, equipment n.e.c., basic pharmaceuticals and pharmaceutical preparations, activities of services related to extraction;
- between 4% and 5% for crude petroleum natural gas extraction, printing and reproduction of recorded media, coking products and products from crude petroleum processing, forestry and logging (including fishing and aquaculture), coal and lignite mining, other extractive activities, water collection, purification and distribution.

**Decreases in net average earning of** June 2010 as against previous month, were determined by occasional premiums in May (including holiday bonuses), amounts from net profit and from other funds, non-achievement of production or lower cashing (according to the contracts), technical unemployment and financial difficulties. **The most important decreases of net average earning** were registered as follows:

- by 9.0% for financial intermediation (except insurance and pension funding);
- between 6% and 8% for activities auxiliary to financial intermediation, insurance and pension funding, metallurgy;
- between 4% and 6% for tobacco products, water transport, general government, production and supply of electric and thermal energy, gas, hot water and air conditioning.

**Budgetary sector**<sup>1</sup> registered decreases in net average earning as against previous month, in all the activities: general government (-4.5%), education (-2.1%), health and social assistance (-1.7%).

## June 2010 as compared to June 2009

In comparison with June 2009, net nominal average earning increased by 3.1%. Real earning index as against the same period of previous year was 98.8%.

### Methodological notes

1. Monthly data on earning and number of employees are obtained from a sampling statistical survey. For the sample size there were taken into consideration to get estimations of the main surveyed characteristics, affected by errors in the limit of +/-3% and guaranteed with a probability of 95%. Since January 2010, the sample includes 25000 economic and social units. Budgetary units are exhaustively included in the survey, except the units of local public administration for which data at level of local communal councils are collected based on a representative sample at county level (about 770 units). For economic sector, there were included in the survey the units with four employees and over, representing 92.73% of total employees in this sector.

**Objective** of monthly statistical survey on earning is to evaluate short term trends of monthly and hourly average earning per total economy and by activity sector.

2. Data obtained from monthly statistical survey on earning and number of employees are **aggregated by homogeneous activity of units**; meaning that general government **does not include** all the secondary activities developed by central and local general government, such as:

- social assistance,
- cultural, sport and recreative activities,
- landscape and services for buildings,

---

<sup>1</sup> see Methodological notes from point 3 regarding „budgetary sector“.

- agriculture,
- water distribution, sanitation, waste administration, decontamination activities,
- construction,
- transport and storage,
- production and supply of electric and thermal energy, gas, hot water and air conditioning,
- renting and sub-renting real estate goods etc.

Information for secondary activities are each included in economic activities, according to corresponding CANE Rev.2 .

3. Information regarding „**budgetary sector**” should be used carefully, because data refer to statistics from economic activities (aggregated by homogeneous activity) **according to CANE Rev.2** of general government, education and health and social assistance (including private sector for education – about 3%, respectively health and social assistance - about 5%), excluding armed forces and similar (MND, RIO, MI etc.).

These statistics do not take into account the financing type, their purpose being to provide information by economic activity according to CANE Rev.2.

Information corresponding to the financing type are administered by the Ministry of Public Finance, according to the stipulations of UGO no. 48/2005, with later completions and modifications.

#### 4. Concepts and definitions

**Gross nominal earning** comprises alaries, respectively rights in cash and in kind for employees for the work done (including for overtime) according to salary type, increases and indemnities as per cent of salary or in fixed amounts, other additions to salary according to the law, amounts paid for time not worked (indemnities for rest and study leaves, holdays and days off, amounts paid from salary fund for medical leaves), premiums, holiday bonuses and other amounts paid from salary fund according to normative documents and collective labour contracts, amounts paid from net profit and other funds (including equivalent value of lunch tickets).

**Net nominal earning** is obtained subtracting from gross nominal earning the tax, contribution of employees for health social insurance, individual contribution of state social insurance and employee contribution to unemployment insurance budget.

**Monthly average earning** represents the ratio between amount paid to employees by economic units in the reference month, no matter of period and average number of employees. Average number of employees represents an arithmetic mean calculated based on daily number of employees in the reference month. Number of employees taken into calculation includes only persons who were paid for that month.. There are not taken into account employees in unpaid holiday, on strike, detached to work abroad and those whose labour contract/agreement was suspended.

**Gross nominal earning index** is calculated as ratio between gross nominal average earning of current month and that of reference month, expressed in per cent .

**Net nominal earning index** is calculated as ratio between net nominal earning of current month and that of reference month expressed in per cent.

**Real earning index** is calculated as ratio between net average earning index and general consumer price index expressed in per cent.

*Additional information can be obtained from the publication Monthly Statistical Bulletin no. 6./2010.*

The next press release will be issued on Monday, September 6, 2010.

**Table 1. EARNING BY CANE DIVISION**

	CANE Rev.2 DIVISION	AVERAGE EARNING IN JUNE 2010			
		GROSS		NET	
		LEI	% as to May 2010	LEI	% as to May 2010
<b>TOTAL ECONOMY</b>		<b>1951</b>	<b>99,4</b>	<b>1422</b>	<b>99,6</b>
<b>Agriculture, forestry and fishing</b>	<b>01-03</b>	<b>1399</b>	<b>100,4</b>	<b>1034</b>	<b>100,7</b>
Agriculture, hunting and related services	01	1351	98,8	997	99,0
Forestry and logging; fishing and aquaculture	02-03	1515	104,1	1121	104,3
<b>Industry total</b>	<b>05-39</b>	<b>1905</b>	<b>101,4</b>	<b>1402</b>	<b>101,3</b>
<b>Mining and quarrying</b>	<b>05-09</b>	<b>3415</b>	<b>104,2</b>	<b>2474</b>	<b>104,5</b>
Coal and lignite mining	05	2991	103,8	2254	104,1
Crude petroleum and natural gas extraction	06	4230	104,8	2989	104,9
Metal ores extraction	07	2559	104,1	1846	103,5
Other extractive activities	08	1911	103,0	1406	104,1
Activities of services related to extraction	09	3751	104,4	2696	105,0
<b>Manufacturing</b>	<b>10-33</b>	<b>1697</b>	<b>102,1</b>	<b>1256</b>	<b>101,9</b>
Food	10	1262	99,8	939	99,8
Beverages	11	2422	109,8	1746	109,7
Tobacco products	12	4173	97,9	2943	94,1
Textiles	13	1468	103,0	1101	102,7
Clothing	14	1133	104,0	870	103,9
Hide tanning and finishing; voyage articles and leather goods, harness and footwear; fur preparation and dyeing	15	1212	102,9	925	102,7
Wood processing, wood and cork products, except furniture; straw articles and of other knitted vegetal materials	16	1144	97,4	857	97,5
Paper and paper products	17	1683	100,2	1258	100,9
Printing and reproduction of recorded media	18	1910	104,8	1411	104,9
Coking products and products from crude petroleum processing	19	4206	105,9	2972	104,8
Chemical substances and products	20	2323	104,1	1697	103,8
Basic pharmaceuticals and pharmaceutical preparations	21	3031	105,2	2189	105,5
Rubber and plastic products	22	1771	99,5	1306	99,8
Other products of nonmetallic minerals	23	2012	103,4	1467	103,2
Metallurgy	24	2294	93,0	1678	93,3
Metallic construction and metal products, except machinery, equipment and installations	25	1696	102,4	1251	102,1
Computers and electronic and optical products	26	2293	110,4	1675	109,9
Electric equipment	27	1819	103,3	1351	103,7
Machinery, outfit and equipment n.e.c.	28	2030	106,1	1489	105,9

	CANE Rev.2 DIVISION	AVERAGE EARNING IN JUNE 2010			
		GROSS		NET	
		LEI	% as to May 2010	LEI	% as to May 2010
Road transport motor vehicles, trailers and semitrailers	29	2099	100,6	1550	99,2
Other transport means	30	2383	105,8	1732	106,3
Furniture	31	1257	102,0	949	101,9
Other industrial activities n.e.c.	32	1422	102,3	1070	102,2
Repair, maintenance and installation of machinery and equipment	33	2170	99,4	1585	99,7
<b>Production and supply of electric and thermal energy, gas, hot water and air conditioning</b>	<b>35</b>	<b>3510</b>	<b>95,4</b>	<b>2536</b>	<b>95,6</b>
<b>Water distribution; sanitation; waste administration, decontamination activities</b>	<b>36-39</b>	<b>1679</b>	<b>101,7</b>	<b>1232</b>	<b>101,5</b>
Water collection, purification and distribution	36	2009	104,1	1468	104,0
Used waters collection and cleaning	37	1917	98,6	1411	98,3
Waste collection, treatment and disposal; recovery activities of recycling materials; decontamination activities and services	38-39	1382	99,4	1020	99,5
<b>Construction</b>	<b>41-43</b>	<b>1573</b>	<b>100,9</b>	<b>1152</b>	<b>100,8</b>
<b>Wholesale and retail; repair of motor vehicles and motorcycles</b>	<b>45-47</b>	<b>1572</b>	<b>99,9</b>	<b>1150</b>	<b>99,8</b>
<b>Transport and storage</b>	<b>49-53</b>	<b>2154</b>	<b>99,9</b>	<b>1564</b>	<b>100,3</b>
Land transport and transport via pipelines	49	1914	100,1	1386	100,4
Water transport	50	2507	94,9	1849	94,7
Air transport	51	4706	100,6	3314	100,6
Storage and transport auxiliary activities	52	2912	99,7	2094	100,0
Mail and courier	53	1782	100,0	1340	100,6
<b>Hotels and restaurants</b>	<b>55-56</b>	<b>1057</b>	<b>99,6</b>	<b>791</b>	<b>99,9</b>
<b>Information and communications</b>	<b>58-63</b>	<b>3769</b>	<b>103,4</b>	<b>2759</b>	<b>103,4</b>
Publishing	58	3123	99,7	2376	99,6
Activities of cinema production, video and TV program; audio recording and musical publishing; programs broadcast	59-60	2873	101,8	2056	101,9
Telecommunications	61	4275	109,2	3060	109,2
Activities of services in information technology; activities of informatic services	62-63	4026	97,0	3007	97,6
<b>Financial intermediation and insurance</b>	<b>64-66</b>	<b>4544</b>	<b>92,2</b>	<b>3233</b>	<b>92,2</b>
Financial intermediation, except insurance and pension funding	64	4843	91,0	3442	91,0
Insurance reinsurance and pension funding (except those of public social insurance system)	65	3687	99,9	2635	99,7
Activities auxiliary to financial intermediation, insurance and pension funding	66	3153	92,6	2246	92,8

	CANE Rev.2 DIVISION	AVERAGE EARNING IN JUNE 2010			
		GROSS		NET	
		LEI	% as to May 2010	LEI	% as to May 2010
<b>Real estate transactions</b>	<b>68</b>	<b>1829</b>	<b>101,2</b>	<b>1333</b>	<b>101,0</b>
<b>Professional, scientific and technical activities</b>	<b>69-75</b>	<b>2929</b>	<b>102,2</b>	<b>2105</b>	<b>102,6</b>
of which:					
R&D	72	2849	101,1	2039	100,5
<b>Activities of administrative services and activities of support services</b>	<b>77-82</b>	<b>1254</b>	<b>102,5</b>	<b>928</b>	<b>102,1</b>
<b>General government and defence; public social insurance system<sup>*)</sup></b>	<b>84</b>	<b>2697</b>	<b>95,3</b>	<b>1931</b>	<b>95,5</b>
<b>Education</b>	<b>85</b>	<b>2045</b>	<b>97,8</b>	<b>1464</b>	<b>97,9</b>
<b>Health and social assistance</b>	<b>86-88</b>	<b>1779</b>	<b>98,1</b>	<b>1298</b>	<b>98,3</b>
<b>Show biz, cultural and recreation activities</b>	<b>90-93</b>	<b>1571</b>	<b>98,4</b>	<b>1144</b>	<b>98,6</b>
<b>Other activities of services</b>	<b>94-96</b>	<b>1172</b>	<b>100,5</b>	<b>862</b>	<b>100,5</b>

<sup>\*)</sup> except armed forces and similar

Table 2. Evolution of gross average earning (June 2009 – June 2010)

	CANE Rev.2 code	LEI												
		June	July	Aug.	Sept.	Oct.	Nov.	Dec.	Jan.	Febr.	March	April	May	June
		2009						2010						
<b>TOTAL ECONOMY</b>		<b>1887</b>	<b>1901</b>	<b>1845</b>	<b>1860</b>	<b>1881</b>	<b>1866</b>	<b>2023</b>	<b>1967</b>	<b>1940</b>	<b>2074</b>	<b>1973</b>	<b>1962</b>	<b>1951</b>
<b>Agriculture, forestry and fishing</b>	<b>01-03</b>	<b>1308</b>	<b>1369</b>	<b>1327</b>	<b>1322</b>	<b>1354</b>	<b>1337</b>	<b>1610</b>	<b>1404</b>	<b>1389</b>	<b>1428</b>	<b>1401</b>	<b>1394</b>	<b>1399</b>
Agriculture, hunting and related services	01	1228	1280	1239	1241	1263	1237	1314	1388	1351	1367	1364	1367	1351
Forestry and logging; fishing and aquaculture	02-03	1479	1565	1523	1503	1551	1536	2196	1439	1471	1558	1480	1455	1515
<b>Industry total</b>	<b>05-39</b>	<b>1745</b>	<b>1820</b>	<b>1768</b>	<b>1802</b>	<b>1797</b>	<b>1796</b>	<b>1983</b>	<b>1780</b>	<b>1775</b>	<b>1959</b>	<b>1867</b>	<b>1879</b>	<b>1905</b>
<b>Mining and quarrying</b>	<b>05-09</b>	<b>3056</b>	<b>3407</b>	<b>3336</b>	<b>3622</b>	<b>3264</b>	<b>3173</b>	<b>3667</b>	<b>3124</b>	<b>3086</b>	<b>3639</b>	<b>3175</b>	<b>3276</b>	<b>3415</b>
Coal and lignite mining	05	2931	3175	3227	3047	3257	3076	3549	3148	3018	3628	3043	2882	2991
Crude petroleum and natural gas extraction	06	3760	4336	4063	5068	3878	3657	4244	3510	3480	4272	3703	4038	4230
Metal ores extraction	07	2238	2462	2535	2796	2439	2405	2753	2317	2430	2637	2647	2459	2559
Other extractive activities	08	1612	1632	1636	1573	1647	1891	2432	1833	1935	1970	1751	1855	1911
Activities of services related to extraction	09	3083	3452	3449	3257	3408	3702	3782	3262	3295	3452	3371	3594	3751
<b>Manufacturing</b>	<b>10-33</b>	<b>1544</b>	<b>1592</b>	<b>1542</b>	<b>1564</b>	<b>1581</b>	<b>1590</b>	<b>1709</b>	<b>1561</b>	<b>1580</b>	<b>1718</b>	<b>1652</b>	<b>1662</b>	<b>1697</b>
Food	10	1271	1282	1275	1281	1286	1293	1366	1237	1240	1318	1257	1265	1262
Beverages	11	2199	2040	2096	2010	1995	1981	2284	2185	2165	2427	2269	2206	2422
Tobacco products	12	3532	3774	3716	3385	3767	3654	4100	3590	4248	5670	3852	4261	4173
Textiles	13	1288	1283	1197	1289	1343	1363	1490	1352	1394	1486	1389	1425	1468
Clothing	14	1041	1067	1018	1015	1032	1049	1096	1055	1047	1092	1070	1089	1133
Hide tanning and finishing; voyage articles and leather goods, harness and footwear; fur preparation and dyeing	15	1119	1124	1072	1085	1107	1131	1175	1116	1126	1152	1144	1178	1212
Wood processing, wood and cork products, except furniture; straw articles and of other knitted vegetal materials	16	1047	1072	1050	1073	1076	1158	1145	1120	1130	1263	1150	1175	1144
Paper and paper products	17	1509	1531	1549	1538	1593	1560	1741	1553	1546	1685	1668	1680	1683
Printing and reproduction of recorded media	18	1758	1672	1701	1625	1765	1698	1955	1713	1718	1898	1785	1822	1910
Coking products and products from crude petroleum processing	19	3498	4119	4714	4456	3956	3816	4196	2981	3422	3656	3777	3971	4206
Chemical substances and products	20	2147	2246	2114	2187	2085	2193	2312	2163	2126	2294	2285	2231	2323

	CANE Rev.2 code	June	July	Aug.	Sept.	Oct.	Nov.	Dec.	Jan.	Febr.	March	April	May	June
		2009									2010			
Basic pharmaceuticals and pharmaceutical preparations	21	3053	2879	2674	2876	2658	2561	3436	2617	2901	3225	2967	2882	3031
Rubber and plastic products	22	1568	1609	1550	1624	1636	1645	1708	1611	1623	1794	1669	1780	1771
Other products of nonmetallic minerals	23	1801	1842	1816	1846	1858	1806	2059	1926	1829	2282	2007	1946	2012
Metallurgy	24	2020	2053	2172	2201	2221	2065	2450	2122	2170	2322	2374	2468	2294
Metallic construction and metal products, except machinery, equipment and installations	25	1563	1621	1541	1582	1606	1642	1741	1568	1601	1715	1657	1657	1696
Computers and electronic and optical products	26	1920	1977	1945	1970	1995	2039	2248	1982	2054	2195	2058	2077	2293
Electric equipment	27	1618	1711	1668	1741	1749	1752	2053	1672	1689	1930	1751	1761	1819
Machinery, outfit and equipment n.e.c.	28	1877	1902	1798	1827	1832	1890	1942	1902	1857	1966	1914	1913	2030
Road transport motor vehicles, trailers and semitrailers	29	1766	1951	1771	1880	1932	1934	1987	1810	1923	2103	2061	2087	2099
Other transport means	30	2313	2449	2325	2185	2212	2218	2591	2204	2202	2399	2410	2252	2383
Furniture	31	1127	1162	1140	1175	1230	1243	1268	1232	1241	1317	1258	1232	1257
Other industrial activities n.e.c.	32	1340	1297	1254	1283	1294	1278	1271	1378	1370	1443	1359	1390	1422
Repair, maintenance and installation of machinery and equipment	33	1919	2024	1982	1909	2026	2050	2176	2007	1986	2256	2139	2184	2170
<b>Production and supply of electric and thermal energy, gas, hot water and air conditioning</b>	<b>35</b>	<b>3378</b>	<b>3570</b>	<b>3445</b>	<b>3413</b>	<b>3486</b>	<b>3448</b>	<b>4122</b>	<b>3443</b>	<b>3233</b>	<b>3665</b>	<b>3611</b>	<b>3678</b>	<b>3510</b>
<b>Water distribution; sanitation; waste administration, decontamination activities</b>	<b>36-39</b>	<b>1575</b>	<b>1631</b>	<b>1595</b>	<b>1604</b>	<b>1609</b>	<b>1601</b>	<b>1829</b>	<b>1659</b>	<b>1602</b>	<b>1794</b>	<b>1696</b>	<b>1651</b>	<b>1679</b>
Water collection, purification and distribution	36	1850	1995	1914	1926	1931	1913	2260	1897	1842	2199	1999	1929	2009
Used waters collection and cleaning	37	1770	1848	1790	1857	1848	1878	1983	1858	1740	1987	1944	1945	1917
Waste collection, treatment and disposal; recovery activities of recycling materials; decontamination activities and services	38-39	1349	1335	1332	1329	1335	1327	1454	1434	1384	1435	1421	1390	1382
<b>Construction</b>	<b>41-43</b>	<b>1517</b>	<b>1564</b>	<b>1548</b>	<b>1556</b>	<b>1556</b>	<b>1551</b>	<b>1650</b>	<b>1549</b>	<b>1508</b>	<b>1583</b>	<b>1554</b>	<b>1559</b>	<b>1573</b>
<b>Wholesale and retail; repair of motor vehicles and motorcycles</b>	<b>45-47</b>	<b>1517</b>	<b>1526</b>	<b>1517</b>	<b>1537</b>	<b>1524</b>	<b>1548</b>	<b>1664</b>	<b>1540</b>	<b>1540</b>	<b>1613</b>	<b>1603</b>	<b>1574</b>	<b>1572</b>
<b>Transport and storage</b>	<b>49-53</b>	<b>1976</b>	<b>2031</b>	<b>1991</b>	<b>1960</b>	<b>1941</b>	<b>1997</b>	<b>2189</b>	<b>2053</b>	<b>2011</b>	<b>2116</b>	<b>2158</b>	<b>2156</b>	<b>2154</b>
Land transport and transport via pipelines	49	1760	1804	1754	1737	1734	1789	1898	1855	1809	1879	1958	1912	1914
Water transport	50	2168	2142	2185	2245	2255	2306	2368	2679	2590	2709	2828	2642	2507

	<b>CANE Rev.2 code</b>	<i>June</i>	<i>July</i>	<i>Aug.</i>	<i>Sept.</i>	<i>Oct.</i>	<i>Nov.</i>	<i>Dec.</i>	<i>Jan.</i>	<i>Febr.</i>	<i>March</i>	<i>April</i>	<i>May</i>	<i>June</i>
		2009								2010				
Air transport	51	4835	4805	4703	4748	4637	4607	4754	4520	4484	4639	4539	4680	4706
Storage and transport auxiliary activities	52	2619	2746	2710	2628	2559	2661	3211	2680	2608	2710	2794	2922	2912
Mail and courier	53	1686	1694	1694	1663	1653	1659	1728	1695	1708	1928	1775	1782	1782
<b>Hotels and restaurants</b>	<b>55-56</b>	<b>1041</b>	<b>1087</b>	<b>1065</b>	<b>1065</b>	<b>1028</b>	<b>1031</b>	<b>1086</b>	<b>1098</b>	<b>1038</b>	<b>1063</b>	<b>1075</b>	<b>1061</b>	<b>1057</b>
<b>Information and communications</b>	<b>58-63</b>	<b>3375</b>	<b>3367</b>	<b>3304</b>	<b>3373</b>	<b>3332</b>	<b>3348</b>	<b>3903</b>	<b>3492</b>	<b>3572</b>	<b>3911</b>	<b>3894</b>	<b>3646</b>	<b>3769</b>
Publishing	58	2835	2729	2827	2973	2828	3017	2977	2983	3078	3405	3094	3131	3123
Activities of cinema production; video and TV programs; audio recording and musical publishing; programs broadcast	59-60	2919	3066	2968	2904	2846	2832	3134	2687	2617	2711	2820	2821	2873
Telecommunications	61	3755	3696	3602	3613	3677	3596	4724	3828	3995	4311	4566	3914	4275
Activities of services in information technology; activities of informatic services	62-63	3525	3583	3456	3639	3528	3554	3802	3880	3869	4383	4120	4150	4026
<b>Financial intermediation and insurance</b>	<b>64-66</b>	<b>4912</b>	<b>4296</b>	<b>4247</b>	<b>4175</b>	<b>4102</b>	<b>4377</b>	<b>5268</b>	<b>4325</b>	<b>4322</b>	<b>5618</b>	<b>4832</b>	<b>4926</b>	<b>4544</b>
Financial intermediation, except insurance and pension funding	64	5504	4671	4608	4539	4413	4778	5767	4447	4533	6110	5086	5320	4843
Insurance, reinsurance and pensions funding ( except those of public social insurance system )	65	3214	3286	3290	3171	3288	3259	3962	4039	3634	4116	4026	3692	3687
Activities auxiliary to financial intermediation, insurance and pension funding	66	2458	2567	2486	2391	2436	2382	2540	3592	3579	3600	3876	3405	3153
<b>Real estate transactions</b>	<b>68</b>	<b>1703</b>	<b>1716</b>	<b>1745</b>	<b>1771</b>	<b>1754</b>	<b>1757</b>	<b>1942</b>	<b>1867</b>	<b>1726</b>	<b>1843</b>	<b>1996</b>	<b>1807</b>	<b>1829</b>
<b>Professional, scientific and technical activities</b>	<b>69-75</b>	<b>2767</b>	<b>2853</b>	<b>2751</b>	<b>2710</b>	<b>2796</b>	<b>2822</b>	<b>3076</b>	<b>2782</b>	<b>2903</b>	<b>3006</b>	<b>2838</b>	<b>2866</b>	<b>2929</b>
of which R&D	72	2649	2668	2722	2615	2700	2874	3165	2594	2783	2765	2770	2818	2849
<b>Activities of administrative services and activities of support services</b>	<b>77-82</b>	<b>1183</b>	<b>1196</b>	<b>1191</b>	<b>1167</b>	<b>1204</b>	<b>1217</b>	<b>1259</b>	<b>1232</b>	<b>1212</b>	<b>1257</b>	<b>1232</b>	<b>1224</b>	<b>1254</b>
<b>General government and defence; public social insurance system<sup>*)</sup></b>	<b>84</b>	<b>2786</b>	<b>2914</b>	<b>2656</b>	<b>2624</b>	<b>2712</b>	<b>2650</b>	<b>2908</b>	<b>3091</b>	<b>2998</b>	<b>3085</b>	<b>2819</b>	<b>2829</b>	<b>2697</b>
<b>Education</b>	<b>85</b>	<b>2166</b>	<b>2077</b>	<b>1968</b>	<b>2023</b>	<b>2124</b>	<b>2017</b>	<b>2004</b>	<b>2312</b>	<b>2286</b>	<b>2409</b>	<b>2139</b>	<b>2091</b>	<b>2045</b>
<b>Health and social assistance</b>	<b>86-88</b>	<b>1867</b>	<b>1805</b>	<b>1735</b>	<b>1745</b>	<b>1864</b>	<b>1693</b>	<b>1664</b>	<b>2003</b>	<b>1889</b>	<b>1882</b>	<b>1806</b>	<b>1814</b>	<b>1779</b>
<b>Show biz, cultural and recreation activities</b>	<b>90-93</b>	<b>1678</b>	<b>1683</b>	<b>1656</b>	<b>1640</b>	<b>1645</b>	<b>1594</b>	<b>1681</b>	<b>2019</b>	<b>1682</b>	<b>1683</b>	<b>1624</b>	<b>1596</b>	<b>1571</b>
<b>Other activities of services</b>	<b>94-96</b>	<b>1088</b>	<b>1132</b>	<b>1089</b>	<b>1093</b>	<b>1093</b>	<b>1072</b>	<b>1122</b>	<b>1139</b>	<b>1128</b>	<b>1195</b>	<b>1153</b>	<b>1166</b>	<b>1172</b>

<sup>\*)</sup> except armed forces and similar

Table 3. Evolution of net average earning (June 2009 – June 2010)

	CANE Rev.2 code	LEI												
		June	July	Aug.	Sept.	Oct.	Nov.	Dec.	Jan.	Febr.	March	April	May	June
		2009						2010						
<b>TOTAL ECONOMY</b>		<b>1379</b>	<b>1390</b>	<b>1348</b>	<b>1359</b>	<b>1375</b>	<b>1366</b>	<b>1477</b>	<b>1426</b>	<b>1411</b>	<b>1509</b>	<b>1436</b>	<b>1428</b>	<b>1422</b>
<b>Agriculture, forestry and fishing</b>	<b>01-03</b>	<b>973</b>	<b>1016</b>	<b>985</b>	<b>982</b>	<b>1010</b>	<b>997</b>	<b>1191</b>	<b>1033</b>	<b>1026</b>	<b>1055</b>	<b>1033</b>	<b>1027</b>	<b>1034</b>
Agriculture, hunting and related services	01	917	955	925	926	946	927	982	1022	999	1010	1006	1007	997
Forestry and logging, fishing and aquaculture	02-03	1093	1149	1119	1107	1148	1137	1603	1057	1084	1151	1092	1075	1121
<b>Industry total</b>	<b>05-39</b>	<b>1293</b>	<b>1346</b>	<b>1304</b>	<b>1331</b>	<b>1328</b>	<b>1327</b>	<b>1458</b>	<b>1306</b>	<b>1305</b>	<b>1441</b>	<b>1374</b>	<b>1384</b>	<b>1402</b>
<b>Mining and quarrying</b>	<b>05-09</b>	<b>2223</b>	<b>2465</b>	<b>2383</b>	<b>2596</b>	<b>2331</b>	<b>2260</b>	<b>2614</b>	<b>2214</b>	<b>2188</b>	<b>2606</b>	<b>2279</b>	<b>2367</b>	<b>2474</b>
Coal and lignite mining	05	2199	2356	2311	2202	2345	2201	2557	2228	2135	2635	2237	2165	2254
Crude petroleum and natural gas extraction	06	2673	3082	2883	3600	2732	2575	2987	2470	2449	3004	2605	2850	2989
Metal ores extraction	07	1610	1756	1812	2002	1746	1725	1959	1661	1757	1927	1908	1783	1846
Other extractive activities	08	1192	1199	1205	1162	1216	1383	1764	1335	1418	1449	1287	1351	1406
Activities of services related to extraction	09	2218	2476	2473	2347	2453	2658	2705	2342	2362	2489	2410	2567	2696
<b>Manufacturing</b>	<b>10-33</b>	<b>1152</b>	<b>1186</b>	<b>1146</b>	<b>1166</b>	<b>1178</b>	<b>1186</b>	<b>1269</b>	<b>1155</b>	<b>1172</b>	<b>1274</b>	<b>1225</b>	<b>1233</b>	<b>1256</b>
Food	10	945	953	947	954	958	964	1015	920	922	980	936	941	939
Beverages	11	1591	1483	1528	1457	1460	1447	1658	1579	1571	1746	1640	1591	1746
Tobacco products	12	2509	2669	2631	2423	2670	2585	2896	2537	3004	4059	2805	3126	2943
Textiles	13	972	967	900	972	1011	1027	1116	1014	1047	1121	1045	1072	1101
Clothing	14	806	824	786	788	800	811	843	809	804	841	822	837	870
Hide tanning and finishing; voyage articles and leather goods, harness and footwear; fur preparation and dyeing	15	857	859	820	835	851	866	898	848	861	882	876	901	925
Wood processing, wood and cork products, except furniture; straw articles and of other knitted vegetal materials	16	788	807	790	808	810	865	857	835	845	939	860	879	857
Paper and paper products	17	1124	1140	1150	1145	1180	1163	1287	1147	1147	1257	1245	1247	1258
Printing and reproduction of recorded media	18	1315	1245	1255	1203	1304	1255	1434	1249	1262	1397	1314	1345	1411
Coking products and products from crude petroleum processing	19	2515	2955	3370	3193	2832	2724	2998	2127	2440	2621	2691	2837	2972
Chemical substances and products	20	1576	1648	1555	1604	1532	1608	1692	1573	1561	1687	1667	1635	1697
Basic pharmaceuticals and pharmaceutical preparations	21	2192	2074	1927	2080	1926	1858	2468	1884	2092	2327	2136	2074	2189
Rubber and plastic products	22	1165	1193	1150	1203	1213	1220	1263	1189	1201	1322	1236	1309	1306
Other products of nonmetallic minerals	23	1322	1349	1335	1354	1362	1325	1511	1400	1339	1663	1469	1421	1467
Metallurgy	24	1499	1531	1602	1626	1642	1531	1798	1558	1594	1706	1733	1799	1678

	CANE Rev.2 code	June	July	Aug.	Sept.	Oct.	Nov.	Dec.	Jan.	Febr.	March	April	May	June
		2009							2010					
Metallic construction and metal products, except machinery, equipment and installations	25	1164	1207	1147	1174	1194	1222	1302	1159	1185	1274	1228	1225	1251
Computers and electronic and optical products	26	1409	1452	1428	1452	1471	1497	1640	1455	1520	1626	1520	1524	1675
Electric equipment	27	1213	1273	1236	1288	1299	1297	1511	1233	1247	1420	1305	1303	1351
Machinery, outfit and equipment n.e.c.	28	1391	1407	1333	1355	1353	1398	1432	1387	1367	1450	1414	1406	1489
Road transport menas, trailers and semitrailers	29	1325	1452	1313	1402	1437	1442	1479	1348	1415	1555	1519	1562	1550
Other transport means	30	1690	1790	1695	1599	1625	1661	1881	1597	1603	1751	1759	1629	1732
Furniture	31	859	886	865	888	929	939	961	925	938	995	953	931	949
Other industrial activities n.e.c.	32	1009	974	938	964	976	964	962	1034	1031	1088	1023	1047	1070
Repair, maintenance and installation of machinery and equipment	33	1415	1497	1461	1416	1504	1516	1604	1466	1455	1656	1565	1589	1585
<b>Production and supply of electric and thermal energy, gas, hot water and air conditioning</b>	<b>35</b>	<b>2440</b>	<b>2584</b>	<b>2490</b>	<b>2471</b>	<b>2531</b>	<b>2487</b>	<b>2954</b>	<b>2472</b>	<b>2324</b>	<b>2633</b>	<b>2595</b>	<b>2652</b>	<b>2536</b>
<b>Water distribution; sanitation, waste administration; decontamination activities</b>	<b>36-39</b>	<b>1162</b>	<b>1200</b>	<b>1175</b>	<b>1185</b>	<b>1187</b>	<b>1183</b>	<b>1342</b>	<b>1217</b>	<b>1180</b>	<b>1315</b>	<b>1244</b>	<b>1214</b>	<b>1232</b>
Water collection, purification and distribution	36	1360	1459	1401	1413	1418	1408	1645	1389	1353	1603	1460	1412	1468
Used waters collection and cleaning	37	1311	1371	1324	1373	1366	1394	1463	1364	1286	1460	1434	1435	1411
Waste collection, treatment and disposal; recovery activities of recycling materials; decontamination activities and services	38-39	998	988	987	990	990	986	1075	1055	1021	1058	1046	1025	1020
<b>Construction</b>	<b>41-43</b>	<b>1114</b>	<b>1146</b>	<b>1135</b>	<b>1142</b>	<b>1143</b>	<b>1141</b>	<b>1215</b>	<b>1132</b>	<b>1116</b>	<b>1170</b>	<b>1144</b>	<b>1143</b>	<b>1152</b>
<b>Wholesale and retail; repair of motor vehicles and motorcycles</b>	<b>45-47</b>	<b>1113</b>	<b>1119</b>	<b>1112</b>	<b>1126</b>	<b>1119</b>	<b>1135</b>	<b>1217</b>	<b>1125</b>	<b>1127</b>	<b>1180</b>	<b>1172</b>	<b>1152</b>	<b>1150</b>
<b>Transport and storage</b>	<b>49-53</b>	<b>1436</b>	<b>1481</b>	<b>1453</b>	<b>1432</b>	<b>1415</b>	<b>1458</b>	<b>1593</b>	<b>1483</b>	<b>1456</b>	<b>1533</b>	<b>1562</b>	<b>1560</b>	1564
Land transport and transport via pipelines	49	1278	1318	1284	1271	1263	1307	1381	1337	1307	1359	1415	1381	1386
Water transport	50	1574	1561	1584	1625	1634	1681	1739	1960	1892	1999	2081	1953	1849
Air transport	51	3410	3400	3326	3354	3282	3262	3361	3184	3168	3264	3192	3295	3314
Storage and transport auxiliary activities	52	1888	1977	1946	1895	1845	1915	2312	1913	1866	1945	2002	2095	2094
Mail and courier	53	1266	1272	1275	1251	1247	1252	1297	1269	1281	1440	1330	1332	1340
<b>Hotels and restaurants</b>	<b>55-56</b>	<b>777</b>	<b>810</b>	<b>794</b>	<b>795</b>	<b>769</b>	<b>771</b>	<b>810</b>	<b>814</b>	<b>775</b>	<b>794</b>	<b>803</b>	<b>792</b>	<b>791</b>
<b>Information and communications</b>	<b>58-63</b>	<b>2447</b>	<b>2456</b>	<b>2399</b>	<b>2450</b>	<b>2416</b>	<b>2432</b>	<b>2839</b>	<b>2545</b>	<b>2599</b>	<b>2871</b>	<b>2839</b>	<b>2668</b>	<b>2759</b>
Publishing	58	2115	2040	2111	2220	2113	2246	2214	2219	2299	2594	2355	2385	2376

	CANE Rev.2 code	June	July	Aug.	Sept.	Oct.	Nov.	Dec.	Jan.	Febr.	March	April	May	June
		2009									2010			
Activities of cinema production, video and TV programs; audio recording and musical publishing; programs broadcast	59-60	2092	2192	2123	2080	2035	2035	2241	1921	1874	1937	2017	2017	2056
Telecommunications	61	2668	2665	2572	2584	2616	2560	3398	2747	2847	3111	3252	2803	3060
Activities of services in information technology; activities of informatic services	62-63	2618	2655	2555	2677	2608	2642	2811	2884	2880	3249	3067	3081	3007
<b>Financial intermediation and insurance</b>	<b>64-66</b>	<b>3513</b>	<b>3083</b>	<b>3039</b>	<b>2994</b>	<b>2942</b>	<b>3141</b>	<b>3761</b>	<b>3078</b>	<b>3078</b>	<b>3998</b>	<b>3439</b>	<b>3506</b>	<b>3233</b>
Financial intermediation, except insurance and pension funding	64	3935	3351	3295	3248	3162	3426	4111	3163	3226	4345	3620	3783	3442
Insurance, reinsurance and pension funding (except those of public social insurance system)	65	2296	2356	2354	2285	2361	2342	2848	2882	2597	2936	2868	2642	2635
Activities auxiliary to financial intermediation, insurance and pension funding	66	1787	1861	1800	1763	1770	1731	1840	2552	2546	2575	2750	2419	2246
<b>Real estate transactions</b>	<b>68</b>	<b>1245</b>	<b>1253</b>	<b>1276</b>	<b>1297</b>	<b>1286</b>	<b>1286</b>	<b>1415</b>	<b>1356</b>	<b>1258</b>	<b>1343</b>	<b>1452</b>	<b>1320</b>	<b>1333</b>
<b>Professional, scientific and technical activities</b>	<b>69-75</b>	<b>1980</b>	<b>2043</b>	<b>1972</b>	<b>1944</b>	<b>2007</b>	<b>2023</b>	<b>2209</b>	<b>1990</b>	<b>2077</b>	<b>2152</b>	<b>2033</b>	<b>2052</b>	<b>2105</b>
of which: R&D	72	1902	1915	1951	1879	1945	2066	2271	1863	1994	1982	1984	2029	2039
<b>Activities of administrative services and activities of support services</b>	<b>77-82</b>	<b>880</b>	<b>889</b>	<b>885</b>	<b>867</b>	<b>897</b>	<b>905</b>	<b>936</b>	<b>908</b>	<b>896</b>	<b>931</b>	<b>913</b>	<b>909</b>	<b>928</b>
<b>General government and defence; public social insurance system<sup>*)</sup></b>	<b>84</b>	<b>2003</b>	<b>2095</b>	<b>1915</b>	<b>1891</b>	<b>1953</b>	<b>1913</b>	<b>2098</b>	<b>2204</b>	<b>2142</b>	<b>2205</b>	<b>2015</b>	<b>2021</b>	<b>1931</b>
<b>Education</b>	<b>85</b>	<b>1553</b>	<b>1491</b>	<b>1410</b>	<b>1450</b>	<b>1525</b>	<b>1449</b>	<b>1442</b>	<b>1644</b>	<b>1632</b>	<b>1714</b>	<b>1531</b>	<b>1495</b>	<b>1464</b>
<b>Health and social assistance</b>	<b>86-88</b>	<b>1365</b>	<b>1322</b>	<b>1271</b>	<b>1279</b>	<b>1363</b>	<b>1249</b>	<b>1232</b>	<b>1451</b>	<b>1372</b>	<b>1370</b>	<b>1315</b>	<b>1320</b>	<b>1298</b>
<b>Show biz, cultural and recreation activities</b>	<b>90-93</b>	<b>1217</b>	<b>1222</b>	<b>1203</b>	<b>1192</b>	<b>1197</b>	<b>1164</b>	<b>1225</b>	<b>1452</b>	<b>1220</b>	<b>1220</b>	<b>1178</b>	<b>1160</b>	<b>1144</b>
<b>Other activities of services</b>	<b>94-96</b>	<b>803</b>	<b>835</b>	<b>802</b>	<b>806</b>	<b>807</b>	<b>792</b>	<b>827</b>	<b>836</b>	<b>833</b>	<b>881</b>	<b>849</b>	<b>858</b>	<b>862</b>

<sup>\*)</sup> except armed forces and similar